

# BARFLY

Stool



neildavid

Weesperstraat 96  
1112 AP Diemen  
Metropolitan Area of Amsterdam

Tel +31 20 4471507  
info@neildavid.com  
www.neildavid.com



# BARFLY

Stool

2015

Neil David Coppens

<sup>EN</sup> The Barfly stool is constructed of solid ash wood, with a play on the contrast between the round legs and square seat.

<sup>NED</sup> De Barfly kruk is gemaakt van massief essenhout, waarbij het onderstel is samengesteld uit rondhout met daarop een contrasterende rechte zitting met lende steun.

## TECHNICAL SPECIFICATION

Frame: Solid European ash wood

Certificates: FSC and PEFC (making use of)

Finish: Water based stain + water based matte lacquer

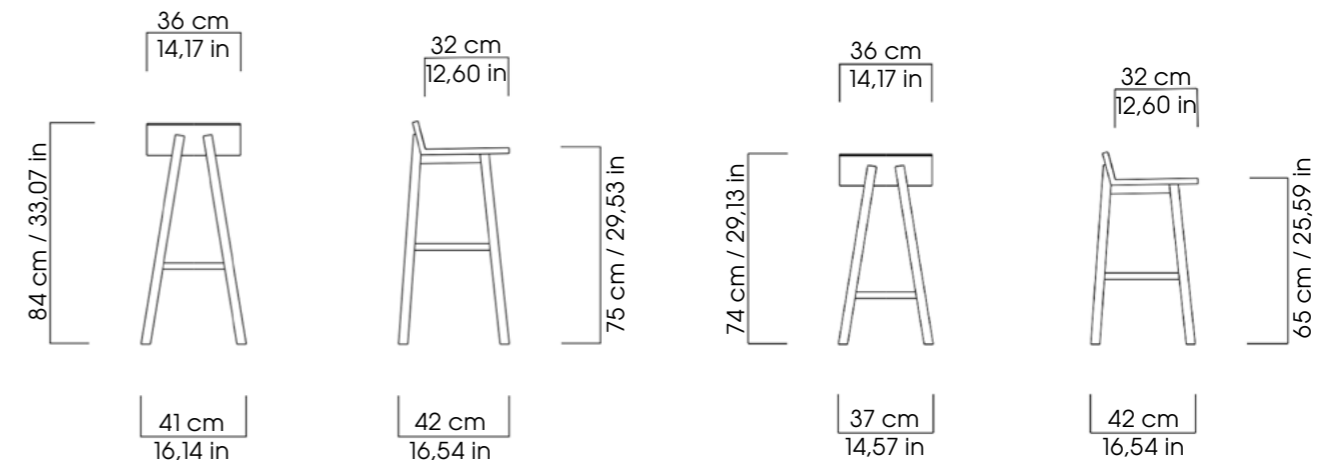
Certificates/ Test Report: DIN EN 12720 (group 1B)

DIN 53160

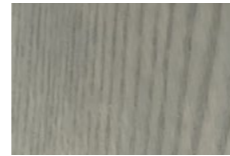
Cold liquids (ISO 4211 German version

EN12720:2009)

## DIMENSIONS CM / INCH



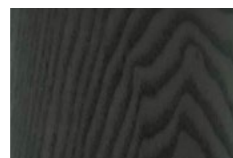
# WOOD FINISH STAINS



light grey  
licht grijs



natural  
blank



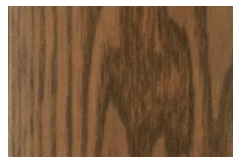
black  
zwart



white  
wit



dark brown  
donker bruin



light brown  
licht bruin



blue  
blauw



orange  
oranje



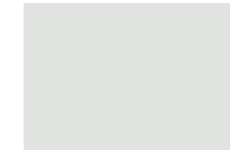
red  
rood

Stain options accentuate the structure of the ash wood, while a matte lacquer finish allows the texture of the grain to show through a denser colour coverage.

*Please be advised that the colours on these pages are printed and therefore may differ slightly from the original.*



**7034**  
yellow grey  
geel grijs



**7035**  
light grey  
licht grijs



**1016**  
yellow  
geel



**9011**  
black  
zwart



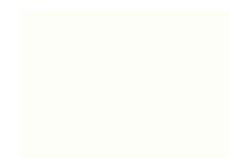
**5002**  
ultra blue  
ultra blauw



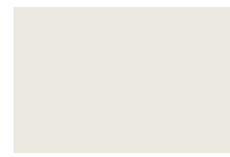
**5024**  
light blue  
licht blauw



**5003**  
dark blue  
dark blauw



**9010**  
white  
wit



**1013**  
oyster white  
parel wit



**6004**  
blue green  
blauw groen



**3004**  
purple red  
paars rood



**3020**  
red  
rood



**2002**  
orange  
oranje

# WOOD FINISH MATTE COLOR LACQUERS

The matte finish does not influence the true colour of the lacquer.

## *More information?*

### *Netherlands*

Studio

Weesperstraat 96

1112 AP DIEMEN

info@neildavid.com

+31 (0)20 4471507

### *UK*

Studio

23 Altura Tower

Bridges Ct Rd, Battersea

LONDON SW11 3GZ

sales@outoftheblue.design

+44 (0)20 80892035

### *Our website*

neildavid.com

Neil David has the right to change both the design, the material and/or dimensions from this publication with no obligation.

Neil David heeft het recht om veranderingen aan te brengen in zowel ontwerp als materiaal en afmetingen in tegenstelling tot wat er gepubliceerd is zonder waarschuwing.

© 2020 Neil David. All Rights Reserved.

---

# Thank you.