

X
Lounge Chair





X

Lounge Chair

2020

Neil David Coppens

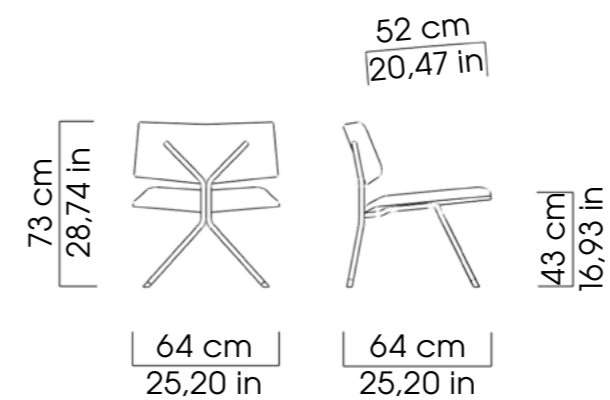
^{EN} The chair characterized by the cross shaped back of the frame.

^{NED} De stoel kenmerkt zich door de kruisvormige achterkant van het frame.

TECHNICAL SPECIFICATION

Seat and back: Beech plywood construction + foam and fabric
Certificates: Beech plywood FSC and PEFC (making use of)
Foam and fabric BS 5852 part 2 (Crib5) or CAL 117-2013

DIMENSIONS CM / INCH

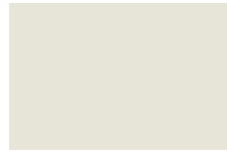


POWDER COATS

MATTE FINE STRUCTURE



9005
black
zwart



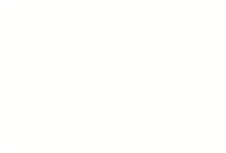
1013
Oyster white
gebroken wit



3020
Red
Rood



3004
dark red
donker rood



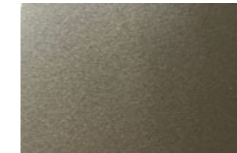
9010
white
wit



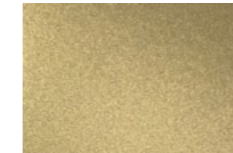
8014
dark brown
donker bruin

POWDER COATS

METALLIC



006
Metallic Bronze
Metallic Brons



007
Metallic Gold
Metallic Goud

Please be advised that the colours on these pages are printed and therefore may differ slightly from the original.

More information?

Netherlands

Studio / showroom
Weesperstraat 96
1112 AP DIEMEN
Contact: Neil David Coppens
neil@neildavid.com
+31 (0)20 4471507

UK

Studio / showroom
Altura Tower
Bridges Ct Rd, Battersea
LONDON SW11 3GZ
Contact: Simon Cervi
simon@neildavid.com
+44 (0)20 80892035

Our website

neildavid.com

Neil David has the right to change both the design, the material and/or dimensions from this publication with no obligation.

Neil David heeft het recht om veranderingen aan te brengen in zowel ontwerp als materiaal en afmetingen in tegenstelling tot wat er gepubliceerd is zonder waarschuwing.

Thank you.